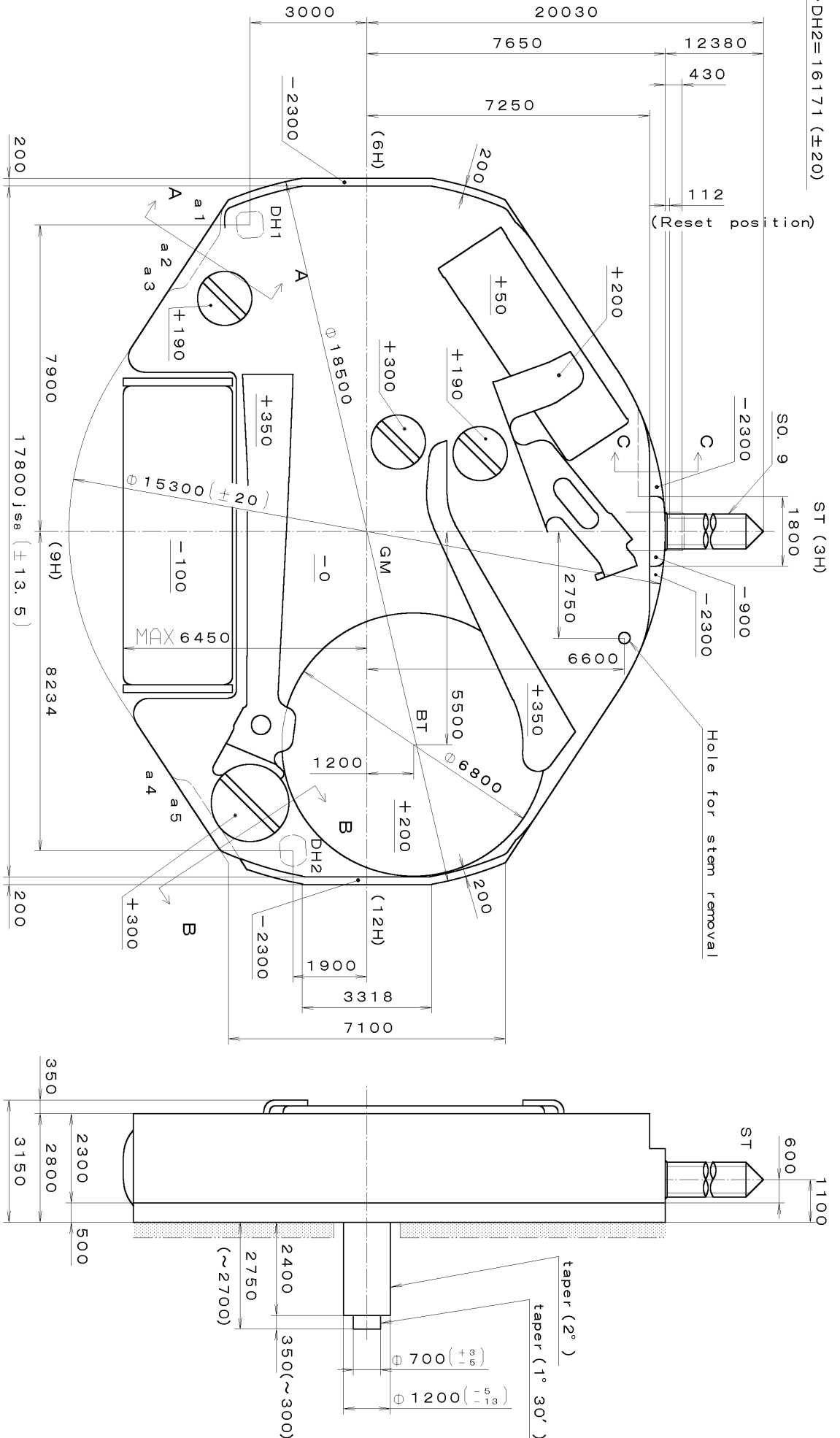


DH1~DH2=16171 (±20)

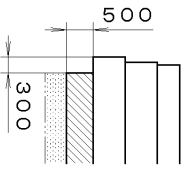
ST (3H)



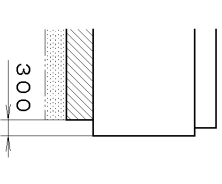
Coordinates

Mark	X	Y	R
GM	0	0	
a1	-7838	-4250	500
a2	-6550	-4855	300
a3	-5951	-4888	300
a4	8101	-4790	300
a5	8700	-4756	300

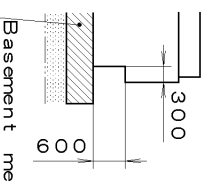
Section A-A



Section B-B



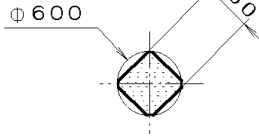
Section C-C



Material	Quantity	Unit	Cal. No. : 2026
Heat Treatment	Scale	1/1000 mm	Parts:
Hardness	Date	10:1	
Plating	Drawn		
	Checked	T. Hiruta	Name:
	Approved		Frame for Case
			Drawing No. : 2026C0000
General Tolerances			
Dimensions			
Angles			

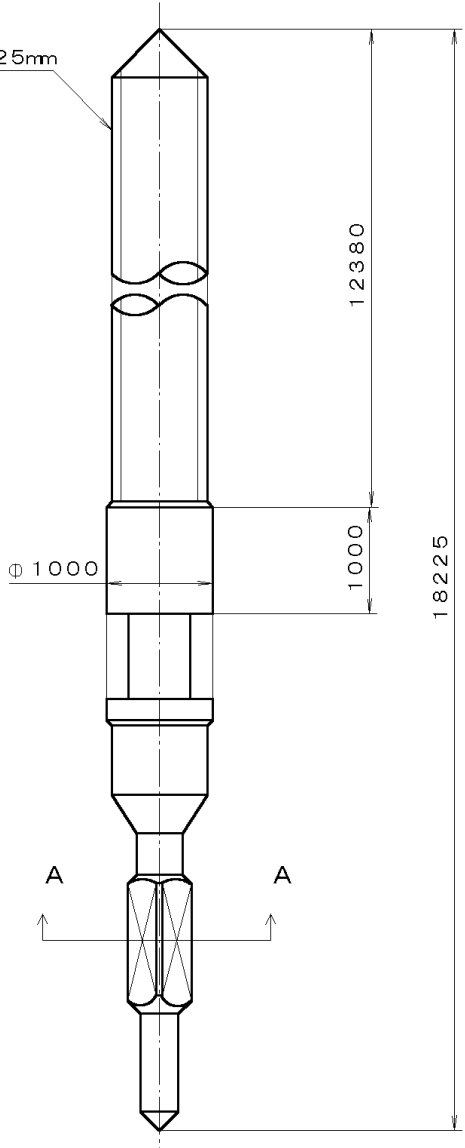
This drawing is provisional and subject to our reconfirmation and/or revision without notice

\*\*\* T.P.W 065-468 (01) \*\*\* (S100 1121) 00-07-28



Section A-A

SO. 9, P=0. 225mm



△			Quantity		Cal. No. :
△			Unit	1/1000 mm	Parts:
△			Scale	20:1	
△			Date		065-468
△			Drawn		
△			Checked	T. Hiruta	Name:
△			Approved		SETTING STEM
Material					Drawing No. : 4680S000
Heat Treatment		General Tolerances			
Hardness		Dimensions			
Plating		Angles			